

LIBERCOURT

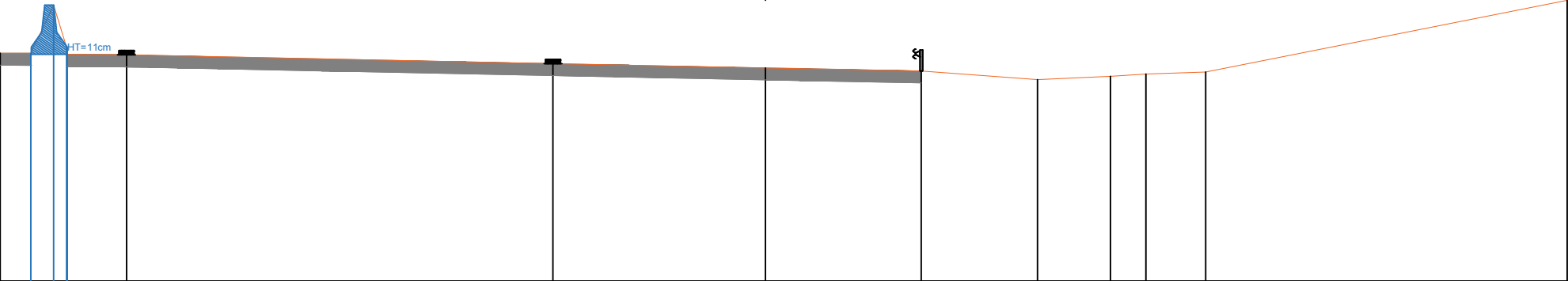
Autoroute A1

Sens Paris -> Lille

Profil P275

indice: 1

Sens Paris -> Lille



Echelle des longueurs : 1/100
Echelle des altitudes : 1/100

PC : 19.00 m

Altitudes TN		22.80	22.80	23.61	22.79		22.78		22.63		22.56		22.51		22.36		22.42		22.46		22.49		23.69
Distances à l'axe TN		-12.788	-12.278	-11.895	-11.670		-10.678		-3.551		0.000		2.607		4.548		5.769		6.361		7.360		13.403
Distances partielles TN		0.510	0.383	0.225	0.992		7.127		3.551		2.607		1.941		1.221		0.592		0.999		6.043		